

Valve Operation

Air Product Valve



WARNING

- Serious injury (including permanent paralysis or death) could result from any activity involving motion, rotation or height.
- All users of this equipment assume this risk of serious injury.
- Mats and pits cannot and do not eliminate hazards.

Safety Instructions

ALWAYS:

1. Consult an instructor prior to use.
2. Use equipment **ONLY** under the supervision of trained and qualified instructors.
3. Use equipment with trained spotters and the proper spotting equipment.
4. Check equipment before use for proper positioning; equipment can move during use.
5. Follow a progressive learning pattern. Assure basic skills are achieved before attempting more advanced skills.
6. Use equipment **ONLY** when all hard exposed surfaces are protected with proper mats.
7. Assure that all inflatable equipment has sufficient air pressure to avoid injury.

DO NOT use the apparatus with damaged, worn or missing parts.

DO NOT allow more than one person at a time to use the equipment.

Pumps that may be included with your Air Product:

A. Hand Pump



B. Magic Air Electric Blower



C. Magic Air Deluxe Electric Blower



Thank you for investing in a Tumbi Trak Air Product.

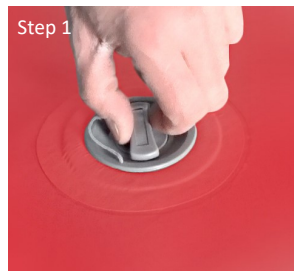
After opening the boxes, please check the parts list to make sure all pieces have arrived in good condition. If you have any questions during this assembly process, please call customer service at 1-800-331-4362.



Any questions or problems, please call Tumbi Trak at

(800) 331-4362

STEP 1 – After unboxing and rolling out your Air Product, locate the valve. Remove the dust cover by turning counter clockwise to reveal the valve pin.



STEP 2 – Before inflating make sure the valve is closed. To close valve push the pin down and turn a quarter of the way around. The pin should be slightly taller than the rim of the valve. Connect the hose by inserting it into the valve, while pushing down and turning clockwise to lock in place. Turn the pump on to inflate. Put the dust cover on once inflated.

STEP 3 – To open the valve and deflate the Air Product, push the pin down and turn a quarter of the way around. The pin should sit just below the valve rim.



Step 4 – Make sure the dust cover remains on the valve both inflated and deflated to prevent particles from entering the valve.

Any questions or problems, please call Tumbi Trak at

(800) 331-4362